

Product data sheet

Specifications

SQUARE D

Green Premium™



Load center, Homeline, 1 phase, 40 spaces, 80 circuits, 200A convertible main breaker, PoN, NEMA1, combo cover

HOM4080M200PC

Product availability: Stock - Normally stocked in distribution facility

Price*: 1,019.00 USD

Main

Product Type	Load Center
Marketing Trade Name	Homeline
Load Center Type	PoN Convertible Mains (breaker)
Rated Current	200 A
Number of Spaces	40
Maximum Number of Single Pole Circuits	80
Enclosure Rating	NEMA 1 indoor enclosure
Cover Type	Combination flush/surface cover
Electrical Connection	Lugs
Provided Equipment	Circuit-breaker 1) 2P 200 A 120/240 V AC main supply ready assembled

Complementary

Max Short Circuit Current Rating	22 kA
Maximum Number of Tandem Breakers	40
Number of Phases	1 phase 3 wires
Voltage Rating	120/240 V AC
Wire Size	AWG 4...250 kcmil aluminium/copper
Ground Bar	Grounding bar (ordered separately)
Busbar Material	Tin plated aluminium: busbar
Enclosure Material	Welded sheet steel
Surface Finish	Baked enamel Gray
Box Number	12
Bus Rated Current	225.0 A
Height	39.4 in (1000 mm)
Width	14.3 in (362 mm)
Depth	3.7 in (95 mm)

Environment

Price is "List Price" and may be subject to a trade discount – check with your local distributor or retailer for actual price.

Ambient Air Temperature for Operation	23.0000000000 °F (-5 °C) 104.0000000000 °F (40 °C)
Product Certifications	UL listed file E-6294

Ordering and shipping details

Category	US1DE3C00045
Discount Schedule	DE3C
GTIN	785901977575
Returnability	Yes
Country of origin	US

Packing Units

Unit Type of Package 1	PCE
Number of Units in Package 1	1
Package 1 Height	5.600 in (14.224 cm)
Package 1 Width	16.100 in (40.894 cm)
Package 1 Length	42.0000000000 in (106.680 cm)
Package 1 Weight	37.730 lb(US) (17.114 kg)
Unit Type of Package 2	PAL
Number of Units in Package 2	18
Package 2 Height	40.0000000000 in (101.600 cm)
Package 2 Width	40.0000000000 in (101.600 cm)
Package 2 Length	48.0000000000 in (121.920 cm)
Package 2 Weight	713.000 lb(US) (323.411 kg)

Sustainability

Green Premium™ label is Schneider Electric's commitment to delivering products with best-in-class environmental performance. Green Premium promises compliance with the latest regulations, transparency on environmental impacts, as well as circular and low-CO₂ products.

Guide to assessing product sustainability is a white paper that clarifies global eco-label standards and how to interpret environmental declarations.

[Learn more about Green Premium >](#)

[Guide to assess a product's sustainability >](#)



Transparency RoHS/REACH

Well-being performance

✓ Toxic Heavy Metal Free

✓ Mercury Free

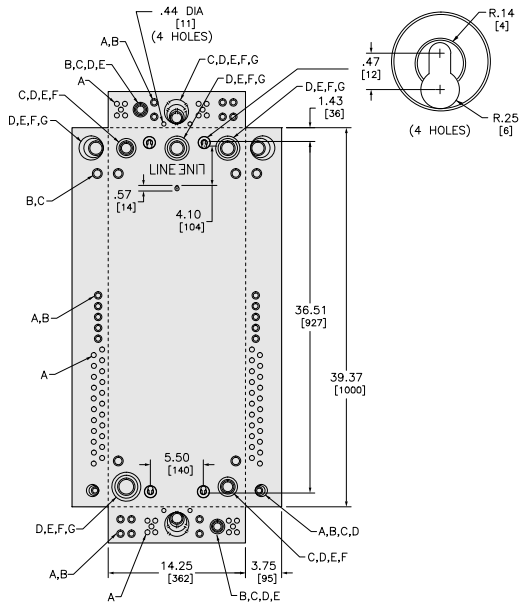
✓ Rohs Exemption Information [Yes](#)

Certifications & Standards

Reach Regulation	REACH Declaration
Eu Rohs Directive	Compliant EU RoHS Declaration
China Rohs Regulation	China RoHS declaration Pro-active China RoHS declaration (out of China RoHS legal scope)
Environmental Disclosure	Product Environmental Profile
Circularity Profile	No need of specific recycling operations
California Proposition 65	"WARNING: This product can expose you to chemicals including: Lead and lead compounds, which is known to the State of California to cause cancer and birth defects or other reproductive harm. For more information go to www.P65Warnings.ca.gov "

Technical Illustration

Dimensions



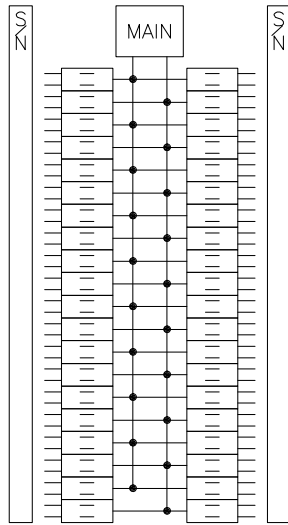
KNOCKOUTS							
SYMBOL	A	B	C	D	E	F	G
IN	.50	.75	1.00	1.25	1.50	2.00	2.50
MM	13	19	25	32	38	51	64

in.
[mm]

All dimensions are approximate. Refer to technical drawings and documents.

Technical Illustration

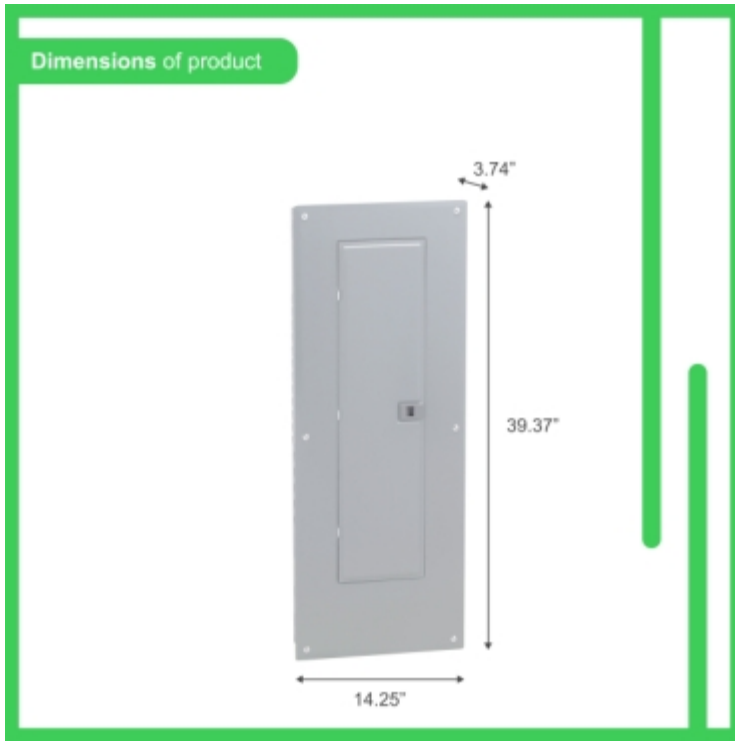
Wiring diagram



HOM4080M200PC

Image of product / Alternate images

Alternative



200 A

Bus Bar Rating /
Capacidad de Barra
de conexión : 225A
max.

120/240 V~ Max., 1Ø,
50/60 Hz.

40 Spaces
Espacios

80 Circuits
Circuitos

Main Breaker
Interruptor Principal

Indoor
Interior

INCLUDES INCLUIDOS



Surface / Flush
Sobreponer / Empotrar
37.83 lbs / 17.16 kg
W14.2" x H39.4" x D3.8"

